

MODULAR DAVIT CRANE SYSTEM EK400

**SPIDER
PLUS**



Thanks to its compact size
it fits in any elevator



The battery-powered
motorized wheels
make it easy to transport
and load into vehicles.



Working height 100m

EK400

The EK400 is a high-performance, patented crane system designed for demanding lifting tasks, offering a maximum capacity of 400 kg and a reach of up to 100 meters. CE-certified and backed by a detailed machine safety report, it has passed rigorous static and dynamic testing to meet the highest European safety standards. The system includes two main components: a robust crane unit and a motorized trolley equipped with a powerful lifting motor, available in both 220V and 110V to suit different power systems worldwide.

Designed for ease of use and adaptability, the EK400 does not include counterweights in the standard package. However, any standard construction fence post can serve as a counterweight, as long as it weighs at least three times the load being lifted. This practical feature allows for flexible, cost-effective integration on various job sites, making the EK400 a smart, reliable choice for professionals who need efficient and safe lifting solutions.

Key Features

- Incl. radio remote control with different control speeds for the winch
- Incl. stair climber set
- Incl. support wheel

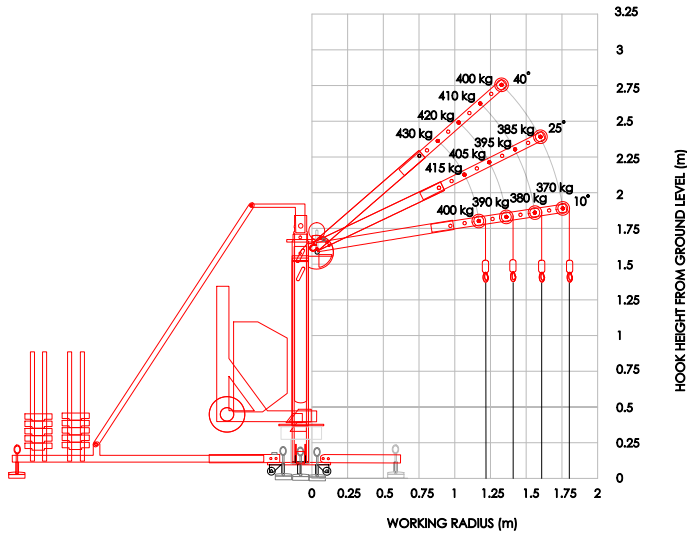
Technical Specifications

Load capacity	400 kg
Working height	100.0 m
Indoor	Yes
Outdoor	Yes
Dead weight	320 kg
Length	65.0 cm
Width	65.0 cm
Height	194.0 cm
Drive unit	Electric motor
Winch single-phase	110v/60Hz or 22v/50Hz
Motorised trolley dimensions LxWxH:	30 x 58 x 105 cm
Weight of motorised trolley	105 kg
Crane weight	215 kg

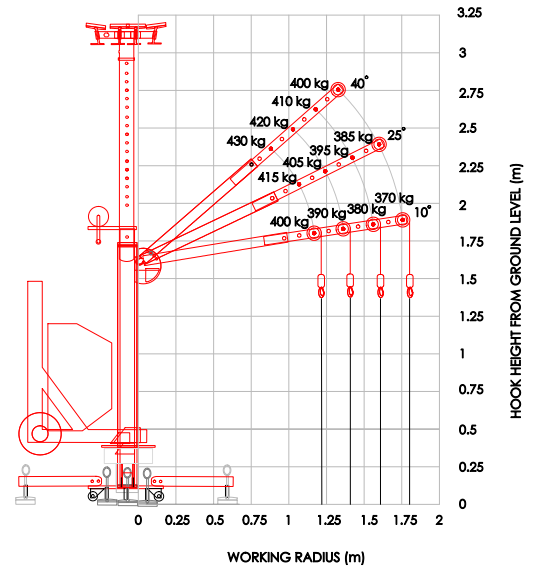
MODULAR DAVIT CRANE SYSTEM EK400

**SPIDER
PLUS**

Counter Weight Load Chart



Ceiling Anchor Load Chart



Dimensions

