

# MODULAR DAVIT CRANE SYSTEM EK400

**SPIDER  
PLUS**



Thanks to its compact size  
it fits in any elevator



The battery-powered  
motorized wheels  
make it easy to transport  
and load into vehicles.



## Technical Specifications

Load capacity	400 kg
Working height	100.0 m
Indoor	Yes
Outdoor	Yes
Dead weight	320 kg
Crane weight	215 kg
Folder Dimension (LxWxH)	65 x 65 x 194 (cm)
Open Dimension (LxWxH)	340 x 235 x 325 (cm)
Max Rotation	360°
Drive unit	Electric motor
Winch single-phase	110v/60Hz or 22v/50Hz
Motorised trolley dimensions LxWxH:	30 x 58 x 105 cm
Weight of motorised trolley	105 kg
Lifting Speed	7–17 meters per minute.
Heaviest Part	Crane hoist – approx. 150 kg.
Manual Lifting	Not available; Generator set Should be used
Manual Cable Lowering	Not supported
3-Phase Connection	Requires preparation/modification
Load Chart	Same for roof fixing and counterweight systems
Max Davit Extension (Roof Fixing)	325 cm
Counterweight Positioning During Rotation	Fixed; only crane and hoist rotate.
Min. Extension for Counterweight Setup	Equal to length of long support legs.

## EK400

The EK400 is a high-performance, patented crane system designed for demanding lifting tasks, offering a maximum capacity of 400 kg and a reach of up to 100 meters.

CE-certified and backed by a detailed machine safety report, it has passed rigorous static and dynamic testing to meet the highest safety standards.

The system includes three main components: a robust crane unit (with counterweights), a motorized trolley equipped with a powerful lifting motor available in both 220V and 110V to suit different power systems worldwide.

EK-400 is an easily installable system on floors or rooftops, using either a counterweight or roof locking system—depending on the site—to lift materials weighing upto 400 kg

## Key Features

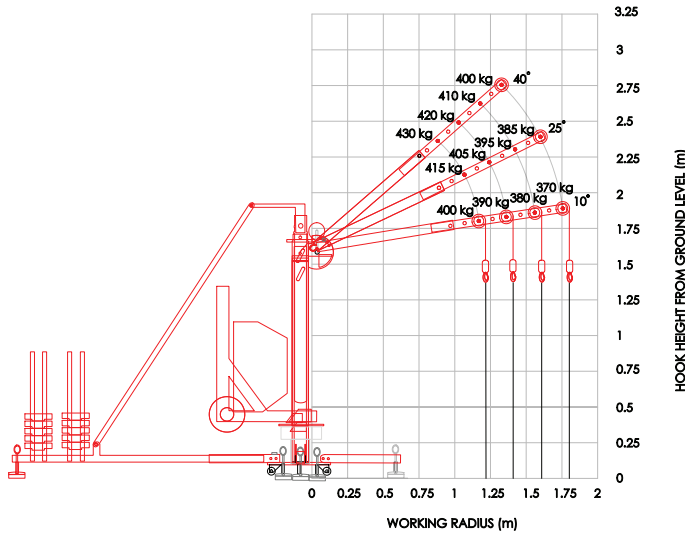
Incl. radio remote control with different control speeds for the winch

Incl. support wheel

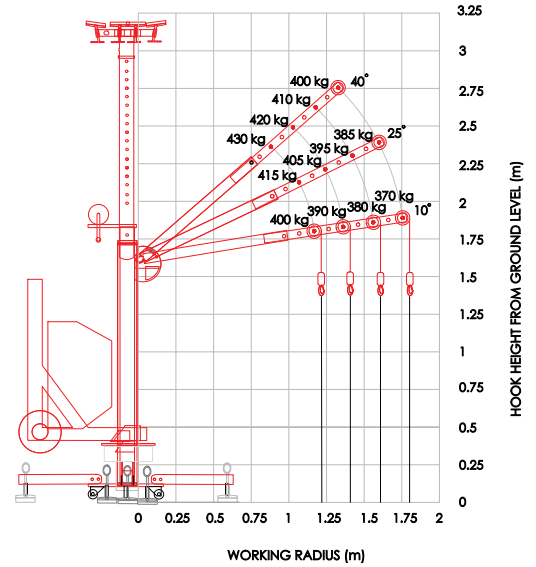
# MODULAR DAVIT CRANE SYSTEM EK400

**SPIDER  
PLUS**

Counter Weight Load Chart



Ceiling Anchor Load Chart



Dimensions

