

MODULAR DAVIT CRANE SYSTEM EK180

**SPIDER
PLUS**



Key Features

- Incl. radio remote control with different control speeds for the winch
- Incl. stair climber set

EK180

The EK180 is a compact yet powerful crane system designed for efficient lifting in tight or hard-to-reach areas. It offers a maximum load capacity of 180 kg and can lift up to 60 meters, making it suitable for a wide range of light to medium-duty applications. The unit includes a radio remote control with multiple winch speed settings, allowing for smooth and precise operation. For easy transport and setup, the EK180 comes with a stair climber set, ideal for moving the crane through narrow passages or multi-level sites. It also features a motorised trolley (30 x 58 x 105 cm, 55 kg) to improve mobility and handling. The main crane unit measures 55-80 x 55 x 194 cm and weighs 105 kg, combining portability with strong performance for demanding job site conditions.

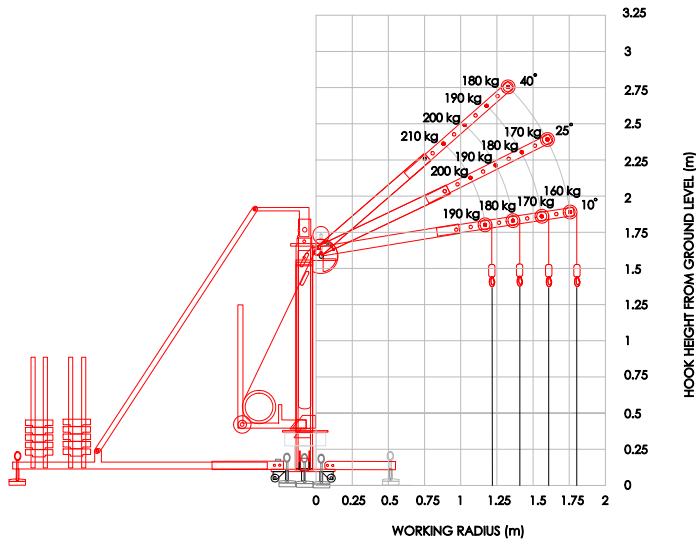
Technical Specifications

Load capacity	180 kg
Working height	60.0 m
Indoor	Yes
Outdoor	Yes
Dead weight	115 kg
Length	55.0 cm
Width	55.0 cm
Height	194.0 cm
Drive unit	Electric motor
Motorised trolley dimensions LxWxH:	30 x 58 x 105 cm
Weight of motorised trolley	55 kg
Crane weight	105 kg

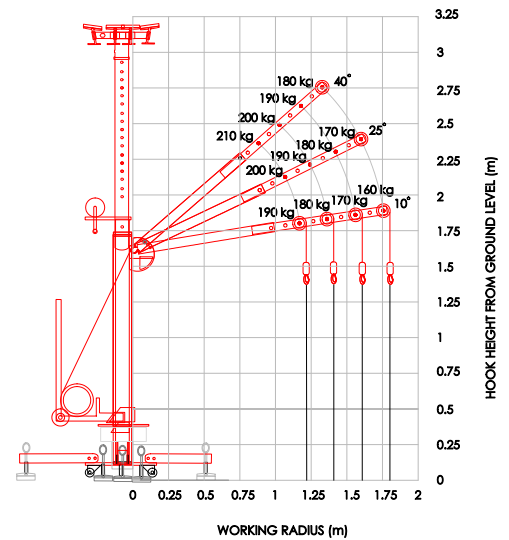
MODULAR DAVIT CRANE SYSTEM EK180

**SPIDER
PLUS**

Counter Weight Load Chart



Ceiling Anchor Load Chart



Dimensions

