

MC 130S



MC 130S

The MC 130S Electric Pick & Carry Cranes is a front-wheel drive powerhouse equipped with two AC electric motors (8.5 kW each, 80V) and insulation class H for superior efficiency and durability. With a maximum capacity of 13,000 kg and removable counterweights (4,000 kg), it offers unmatched versatility.

The machine features a telescopic boom, a front stability bar, and an advanced electronic safe load indicator with a tilting moment limiter for optimal safety.

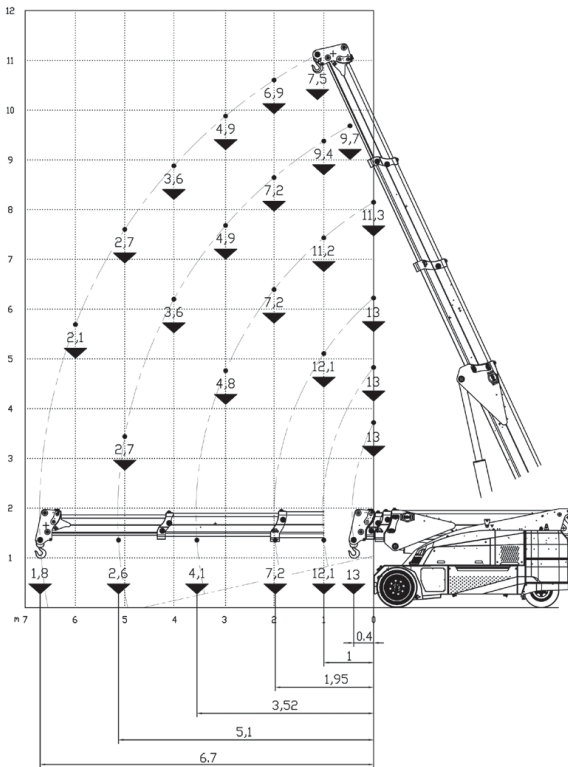
Technical Specifications

Max Capacity	13000 kg
Dimensions	4030x1850x1990 (mm)
Power of electric motors	2 electric motors AC 8,5 kW 80V Insulation class H
Motor driven pump	23kW - 80V AC, Insulation class H
Drive	Front-Wheels drive
Battery capacity	80V - 900Ah (8 working hours)
Rear Steering angle	-90°/+90°
Braking	Automatic Braking System (all wheels)
Front nr.4	Superelastic 300-15"
Rear nr.2	Superelastic 250-15"
Controller	Radio remote controlled
Total weight of the machine	14500 kg
Removable counterweights	4000 kg

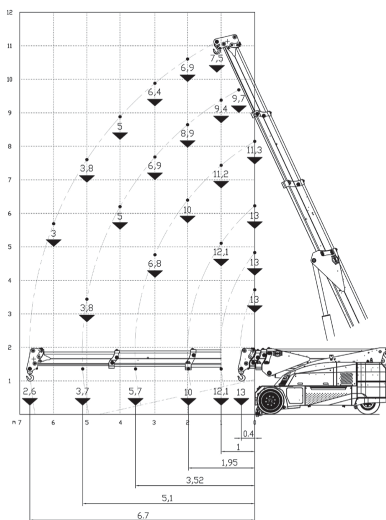
13000kg

Max Capacity

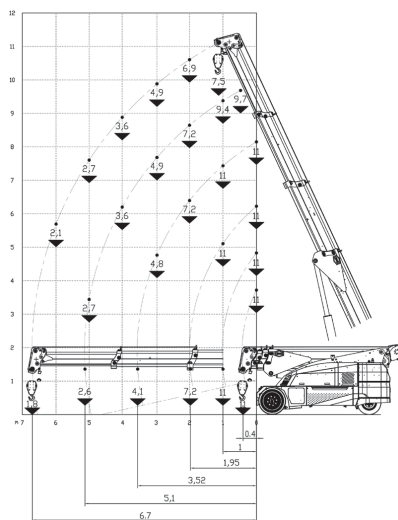
Working Envelope



Hook with Front Bar



Hydraulic Winch



Key Features

- Radio remote controlled
- Front-Wheels drive with counter rotation
- Removable counterweights
- Telescopic Boom
- Front bar for stability

Options

- Hydraulic Winch
- Hydraulic Jib
- Hydraulic Extension
- Manual Jib
- Manual Extension
- Non-Marking Tires
- Hydraulic Forks
- Man Basket
- Atex Conversions
- Customized Painting

EU Standards CE

	UNI ISO 4301-1: A1
	2006/42 CE-2014/30 UE-2014/35 UE- 2000/14 e and subsequent modifications
	EN 13000:2014 ANSI/ASME B30.5-2011 and subsequent modifications

13000kg

Max Capacity

Dimensions

