

# MC 130S

Electric  
Pick & Carry  
Cranes



**MC 130S (metric)**  
**Max Capacity 13,000 Kg**

# MC 130S

RADIO REMOTE CONTROLLED


FRONT-WHEELS DRIVE WITH COUNTER ROTATION

REMOVABLE COUNTERWEIGHTS

TELESCOPIC BOOM











FRONT BAR FOR STABILITY

**Options :**

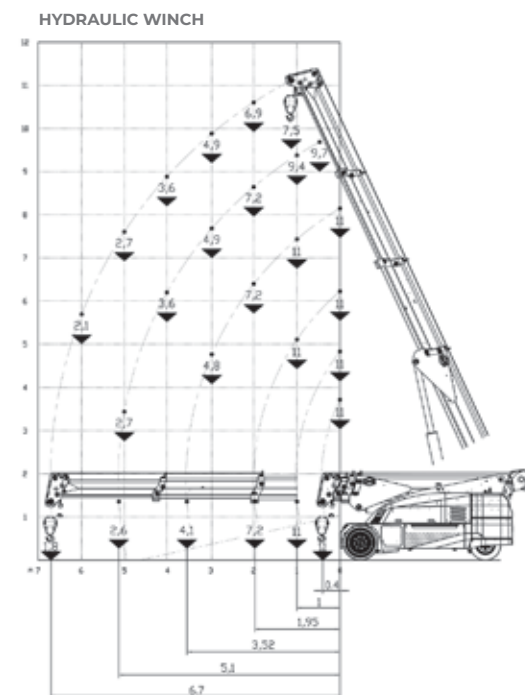
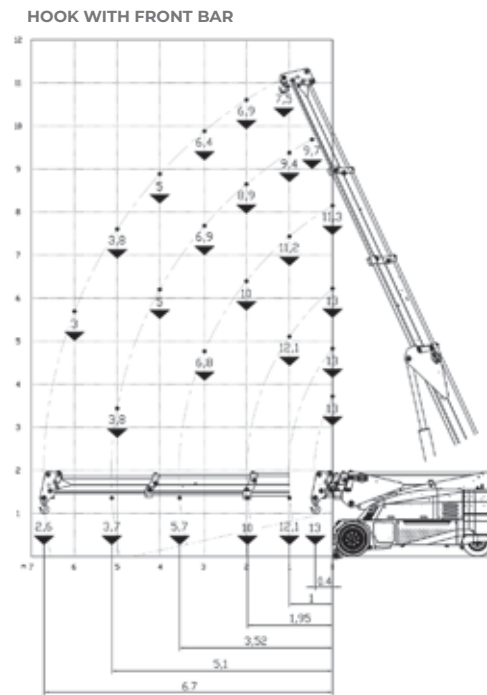
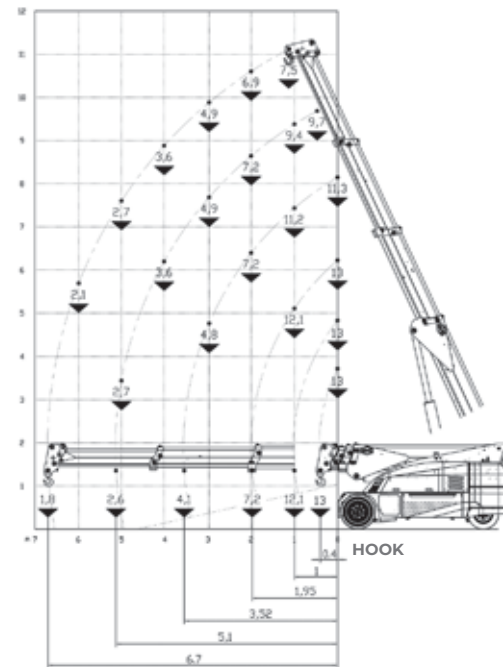
- HYDRAULIC WINCH
- HYDRAULIC JIB
- HYDRAULIC EXTENSION
- MANUAL JIB
- MANUAL EXTENSION
- NON-MARKING TIRES
- HYDRAULIC FORKS
- MAN BASKET
-  ATEX CONVERSIONS
- CUSTOMIZED PAINTING





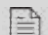
**i** **Technical features**

Max Capacity kg	 13,000	 Front-wheels drive. 2 electric motors AC 8,5 kW 80V Insulation class H	<b>LMI.</b> Electronic safe load indicator and tilting moment limiter
	Dimensions mm	 4030x1850x1990	 Automatic braking system on all wheels
		 80 V - 900 Ah 8 working hours	 Fabricated from preformed and welded quality steel plate
	 Front nr. 4 superelastic 300-15" Rear nr. 2 superelastic 250-15"	 +65°/-5°	
	 Rear Steering angle -90°/+90°	 Motor driven pump 23 kW - 80 V AC, Insulation class H	

**Load charts**



**EU Standards CE**

	UNI ISO 4301-1: A1
	2006/42 CE-2014/30 UE- 2014/35 UE- 2000/14 e and subsequent modifications
	EN 13000:2014 ANSI/ASME B30.5-2011 and subsequent modifications

**Dimensions**

