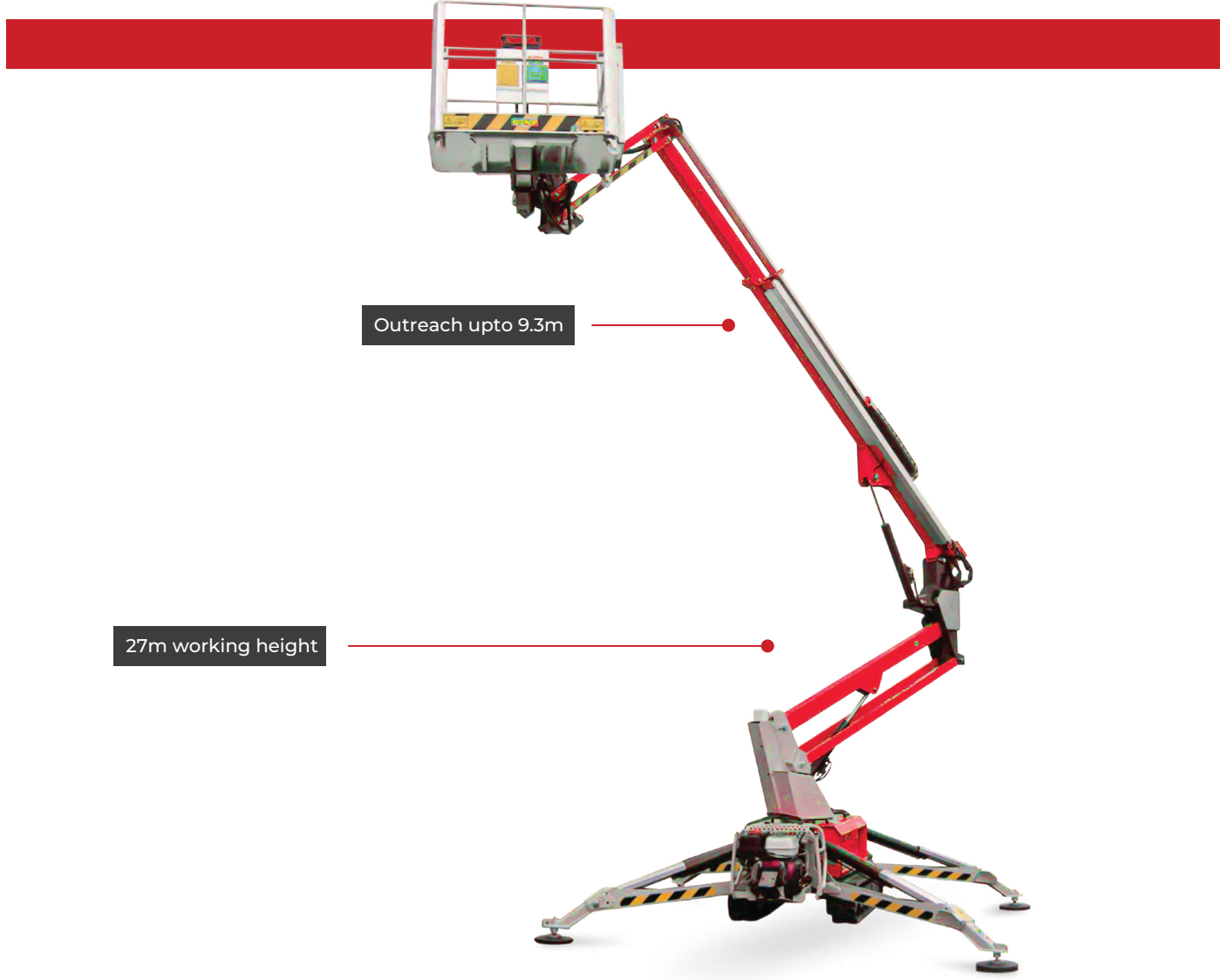


IM R 19 SA



Outreach upto 9.3m

27m working height

IM R 19 SA

Include automatic leveling outriggers, an emergency hand pump, cylinder holding valve, hour meter, and a momentum device. Additionally, it boasts a hydraulic jib, rubber tracks with hydraulically adjustable width, and a 230V - 16 A electro-pump for indoor use. The platform is designed for convenience with air/water outlets and a 230V - 16 A outlet. Power options include a Honda GX390 petrol engine (11 HP at 3600 rpm) and a Yanmar L100N diesel engine (9.9 HP at 3600 rpm). The equipment is further enhanced with a removable wired control box and double-speed traction for versatile operation.

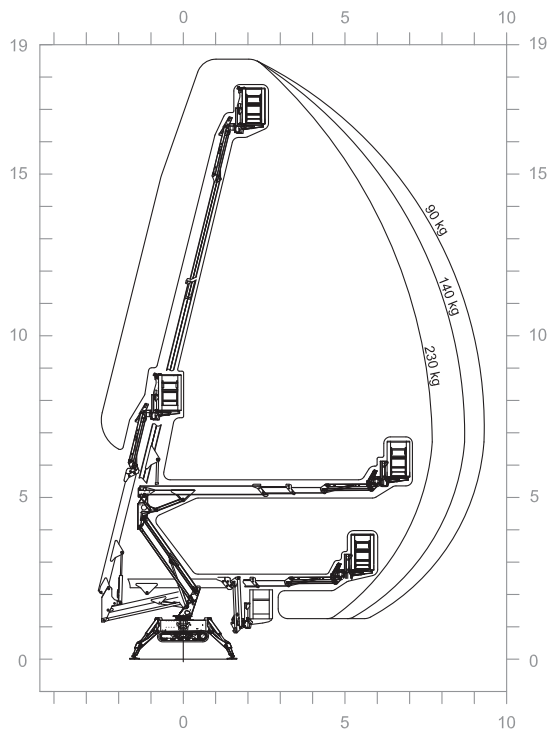
Technical Specifications

Working Height	19 m
Platform height	17 m
Side outreach	7.7m / 230kg - 8.7m / 140kg - 9.3m / 90kg
Slewing	360° (not continuous)
Basket dimensions	1.40 x 0.70 x 1.10
Transport length	5.3 / 4.6 (without basket)
Transport width	Min 0.79 / Max 1.06
Height in stowed position	Min 1.99 / Max 2.10 (with outrigger pads)
Overall outrigger footprint	2.910 x 2.980
Driving speed	2.4 km/h
Gradeability	25°
Platform capacity	230kg
Electric motor	230V / 2.2 kw
Petrol engine	Honda GX390 - 11 HP 3600 rpm
Diesel engine	Yanmar L100N - 9.9 HP 3600 rpm
Total weight of the machine	2435 kg

19m

Working Height

Working Envelope



Key Features

Hydraulically adjustable tracks width: more stability and traction to move around the building site or rough terrain.

State-of-the-art removable control panel: fast and versatile use of the machine.

Proportional and simultaneous electro-hydraulic controls: efficiency and safety for operators.

Automatic levelling outriggers: maximum easiness of use and safety.

Permanent weight control device and momentum device for improved safety and performance.

Slewing 360° (not continuous): outstanding aerial accessibility in any work situation.

Basket rotation $\pm 75^\circ$: complete placement on working site in any condition.

Compact size, with limited overall outrigger footprint.

Engine guarded for safety and working protection.

Aluminium platform 1.40x0.70x1.10 m.

Innovative design with fully enclosed structure.

Dimensions

