

CTE TRACCESS 270



CTE TRACCESS 270

Top of the range of TRACCESS family with impressive 27 m working height, 14 m of max outreach and 250 kg of nominal capacity in the entire working envelope.

Key Features

Unrestricted working area

The most versatile stabiliser configuration

Doorway access

Different power sources available

Winch with 230 Kg lifting capacity

S3 EVO

Remotes

Wireless remote controller with plug in for electrohydraulic controls in the basket and from the ground.



Technical Specifications

Articulated boom (two elements) + telescopic boom (main boom + 2 extension) + jib

Sigma boom articulation

Boom rotation $\pm 300^\circ$ non-continuous

Smooth proportional simultaneous controls with acceleration and deceleration ramps

Wireless remote controller with plug in for electrohydraulic controls in the basket and from the ground

Translation controlled by radio command and cable from the ground and from the basket

Graphic diagnostic display

Motor start and stop by radio control

Quick release aluminum basket with wheels (1300x700x1100)

90° right + 90° left hydraulic basket rotation

Master-Slave basket leveling with manual level management from the basket and electronic un-leveling

Extendable width track

Dual drive speed

Load cell

4 outriggers with sensor contacts and outrigger covers

Stabilization management with S3 EVO with 4 independent stabilizers

Home function

Smart ramps

Anticrush

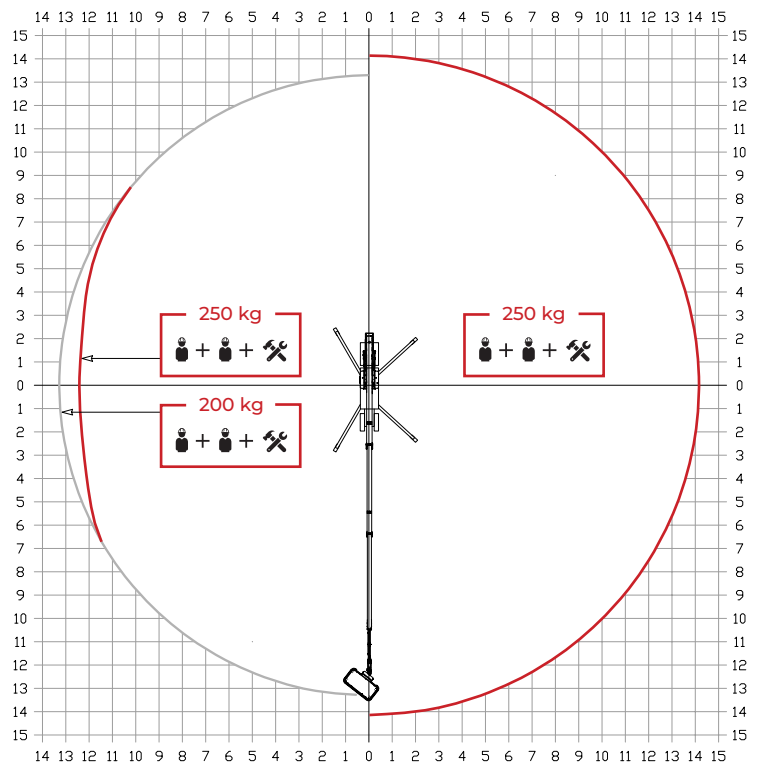
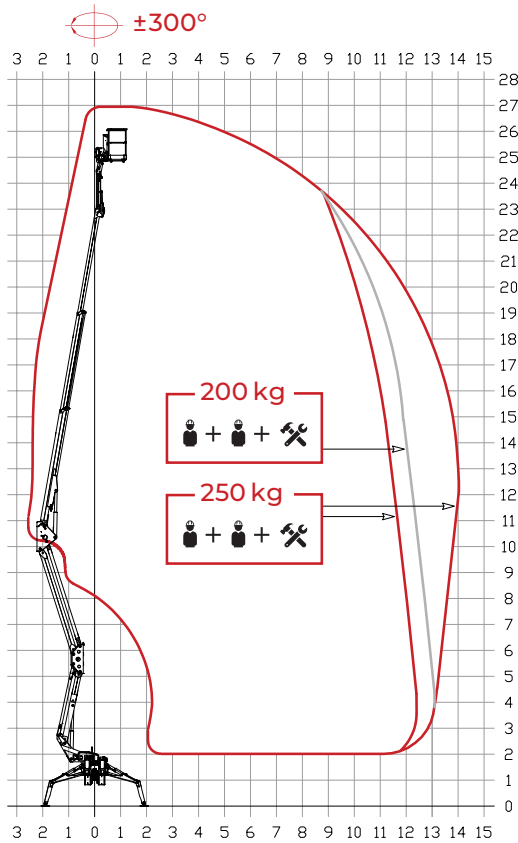
Basket self-centering

Rise&drive jib functionality

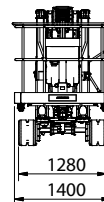
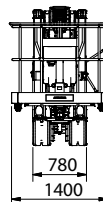
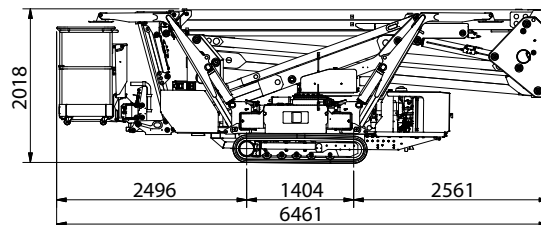
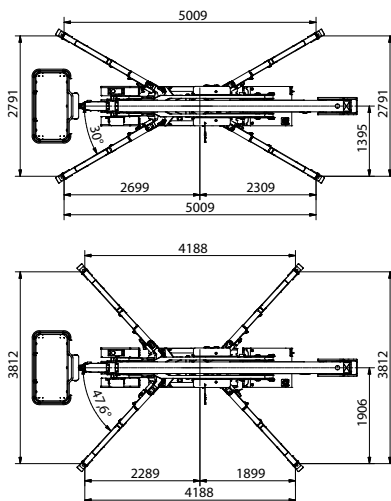
27m

Working Height

Working Envelope



Dimensions



* outreach and height max values and repeatability can change within $\pm 3\%$ due to manufacturing variation and working condition.