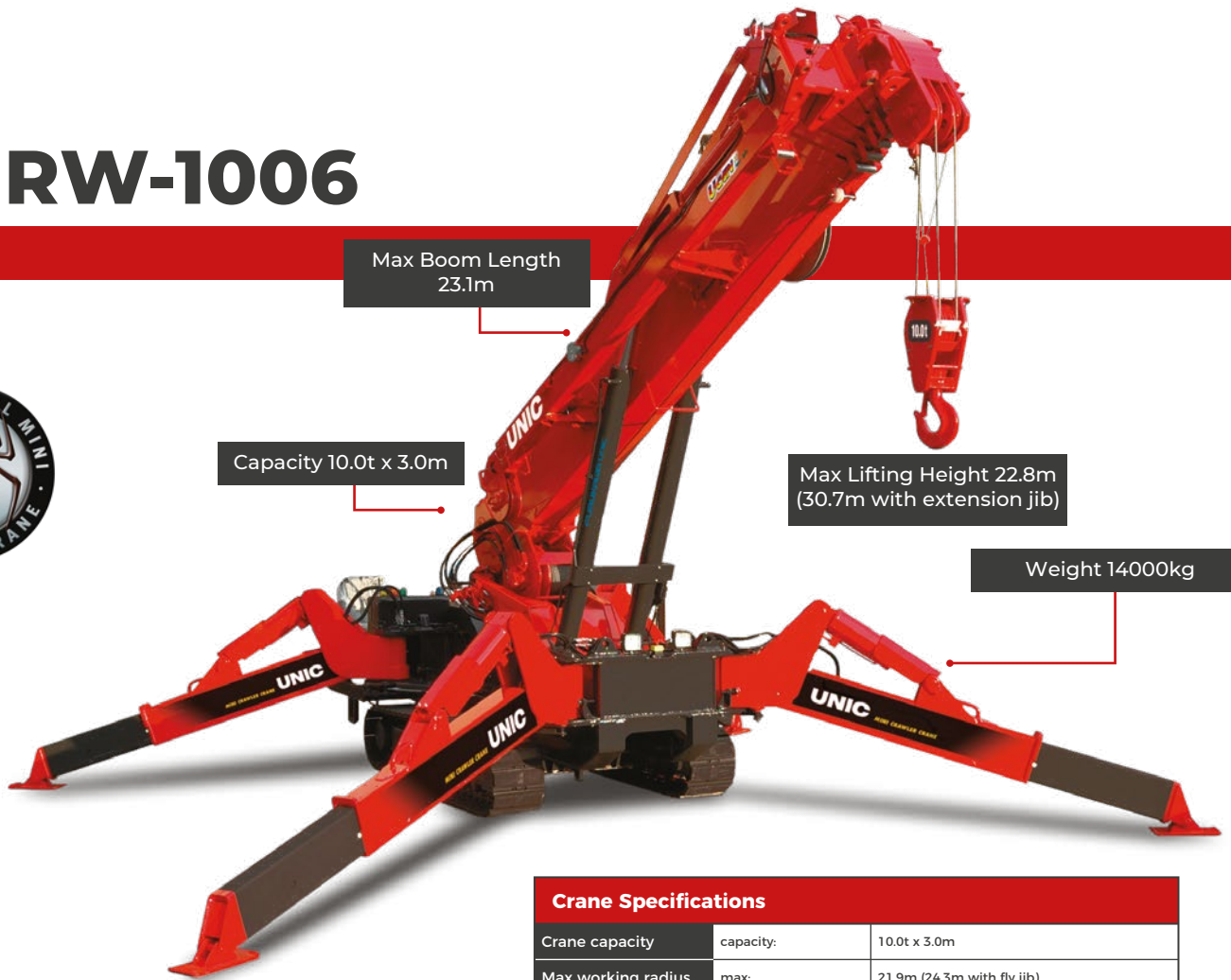


URW-1006



- Total width 2.0m
- Max working radius 21.9m (24.3m with fly jib)
- Max working height 22.8m (30.7m with fly jib)
- Diesel powered and optional integrated mains electric
- Zero length increase with electric option
- Radio remote control with feedback display as standard
- Working area limitation
- High resolution colour SLI display
- Stowable hydraulic fly jib
- Slew limitation (optional)
- Intelligent throttle activation for economy and ecology

The mightiest of the world's mini cranes, the UNIC URW-1006 boasts an unrivalled 10 tonnes of lifting power.

The UNIC URW-1006 offers a generous 30.7 metre lifting height and 24.3 metre working radius, yet at only 2 metres wide still retains class-beating minimal dimensions for working in restricted spaces.

This versatile mini crane also has a unique pick and carry function which enables it to travel with loads up to 1.5 tonnes. Its configurable outriggers provide maximum stability when lifting on uneven surfaces thanks to their full safety interlocking system.

The UNIC URW-1006 is also fitted with a state-of-the-art safe load indicator which gives operator feedback on a high-resolution colour LCD screen for safer lifting.

Crane Specifications

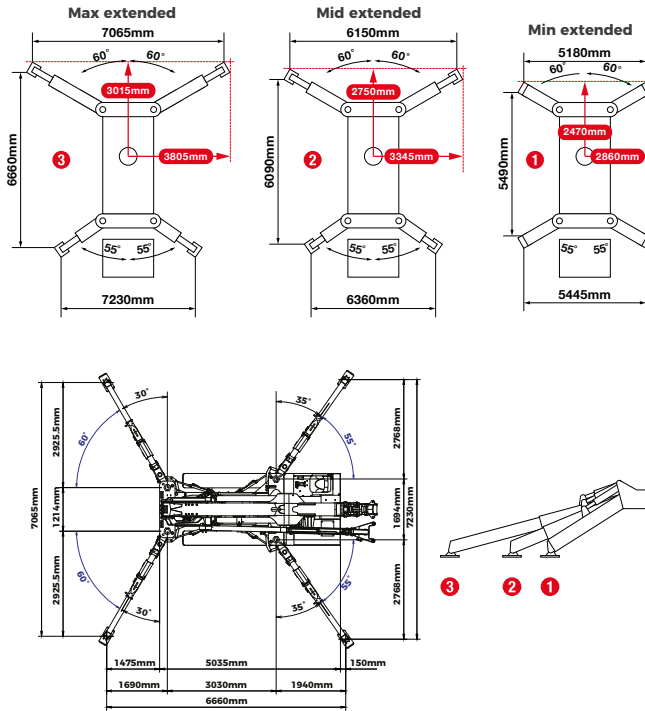
Crane capacity	capacity:	10.0t x 3.0m
Max working radius	max:	21.9m (24.3m with fly jib)
Max lifting height	approx:	22.8m 27.6m with first stage fly jib 30.7m with second stage fly jib
Rope length	max:	30m (4 fall), 62m (2 fall), 128m (1 fall)
Dimensions	folded:	6060mm (l) x 2000mm (w) x 2460mm (h)
Weight	approx:	14000kg including optional electric pack and optional hydraulic fly jib
Point loadings	Due to the many variables involved, point loadings are only available on request	
Hook speed	approx:	10 - (16) m/min at 4th layer with 4-part line 20 - (32) m/min at 4th layer with 2-part line 40 - (64) m/min at 4th layer with 1-part line
Telescopic system	boom length: telescoping speed: boom type:	5.75 - 23.10m 17.35m/88 seconds 6 section hydraulically telescoping boom, hexagonal box construction
Derricking angle/speed	approx:	0 - 80°/4.0 seconds
Slewing angle/speed	approx:	360° (continuous) 1.3min rpm
Hydraulic outriggers	position: vertical: horizontal:	A double acting hydraulic cylinder with link system A double acting hydraulic cylinder, direct pushing type connected with hydraulic locking device A double acting hydraulic cylinder, direct pushing type connected with hydraulic locking device
Traction system	drive: travel speed: gradeability: track ground length: track ground pressure: track width:	hydrostatic 2-speed, stepless forward & reverse 0 - 2.6km/h ±20° (vertical) 20° (traverse) 2515mm 68.2kPa (0.70kg/cm ²) 400mm (city pad rubber on steel)
Engine	manufacturer: fuel: maximum output: starting method: tank capacity:	Yanmar diesel (electric dual power option) 29.8kW (40.50PS) / 2500min rpm electric 83 litres
Electric motor	power: voltage:	11kW 400v AC 50/60hz
Standard equipment	computer controlled moment limiter (safe load indicator) with high resolution colour display, multi-function operation by radio remote control with digital feedback, overwinding alarm, computer controlled intelligent voice warning system, intelligent throttle activation, automatic hook stow, overload warning alarms and lamps, working area limitation.	
Optional equipment	1 fall hook block, 2 fall hook block, mains electric dual power (400v), slew limitation, 1000kg capacity hydraulic fly jib with single part line, data logging	

10.0t

Safe Working Load



Rated Loads & Outrigger Positions



FIRST STAGE EXTENDED 5.8M BOOM LENGTH

Working radius	m	up to 2.5	3.0	3.3	3.5	4.0	4.1	4.58
Outrigger Max-extended	kg	10,000	10,000	9000	8500	7400	7000	5400
Outrigger Mid-extended	kg	10,000	10,000	9000	8000	7000	6500	5200
Outrigger Min-extended	kg	10,000	10,000	8800	7600	6300	6000	5000

SECOND STAGE EXTENDED 5.8 - 9.2M BOOM LENGTH

Working radius	m	up to 2.5	3.0	3.5	4.0	5.0	6.0	7.0	8.08
Outrigger Max-extended	kg	10,000	10,000	7600	6300	5000	4000	3000	2000
Outrigger Mid-extended	kg	10,000	10,000	7600	6300	4800	3650	2700	1700
Outrigger Min-extended	kg	10,000	10,000	7600	6300	4500	3200	2300	1450

THIRD STAGE EXTENDED 5.85 - 8.04M BOOM LENGTH

Working radius	m	up to 4.0	5.0	6.0	7.0	8.0	9.0	10.0	11.58
Outrigger Max-extended	kg	5700	4700	3800	3000	2250	1700	1400	1000
Outrigger Mid-extended	kg	5700	4700	3800	2850	2050	1550	1150	800
Outrigger Min-extended	kg	5700	4500	3450	2450	1700	1200	850	470

FOURTH STAGE EXTENDED 12.7 - 16.1M BOOM LENGTH

Working radius	m	up to 5.0	6.0	7.0	8.0	10.0	11.0	12.0	13.0	14.0	15.03
Outrigger Max-extended	kg	3800	3300	2850	2400	1550	1250	950	800	700	600
Outrigger Mid-extended	kg	3800	3300	2850	2400	1550	1150	880	700	550	400
Outrigger Min-extended	kg	3800	3200	2600	2060	1160	850	600	420	250	100

FIFTH STAGE EXTENDED 16.1 - 19.5M BOOM LENGTH

Working radius	m	up to 6.0	8.0	10.0	12.0	14.0	15.0	16.0	17.0	18.0	18.48
Outrigger Max-extended	kg	2800	2200	1650	1150	800	650	550	450	350	300
Outrigger Mid-extended	kg	2800	2200	1650	1150	710	560	430	310	210	160
Outrigger Min-extended	kg	2800	2000	1350	810	470	340	210	70	-	-

SIXTH STAGE EXTENDED 19. - 22.8M BOOM LENGTH

Working radius	m	up to 8.0	10.0	12.0	14.0	16.0	18.0	20.0	21.93
Outrigger Max-extended	kg	2000	1550	1150	850	700	500	300	150
Outrigger Mid-extended	kg	2000	1550	1150	780	470	230	80	-
Outrigger Min-extended	kg	2000	1450	950	580	320	110	-	-

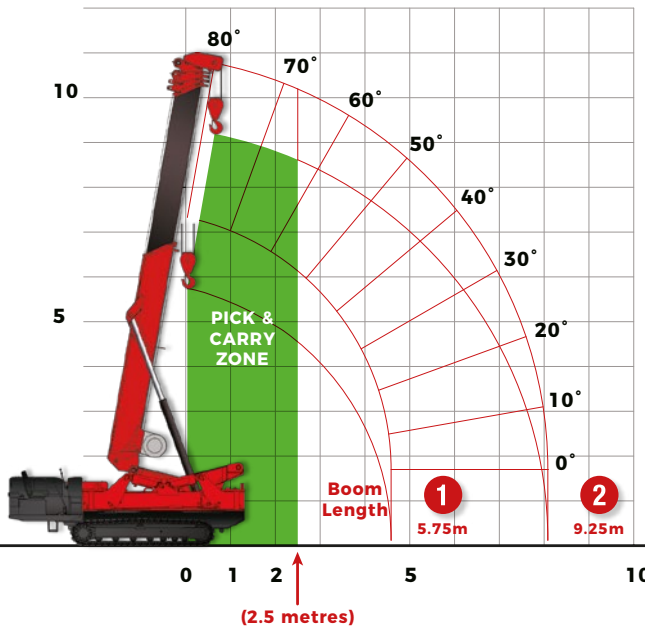


URW-1006

Pick & Carry Working Range

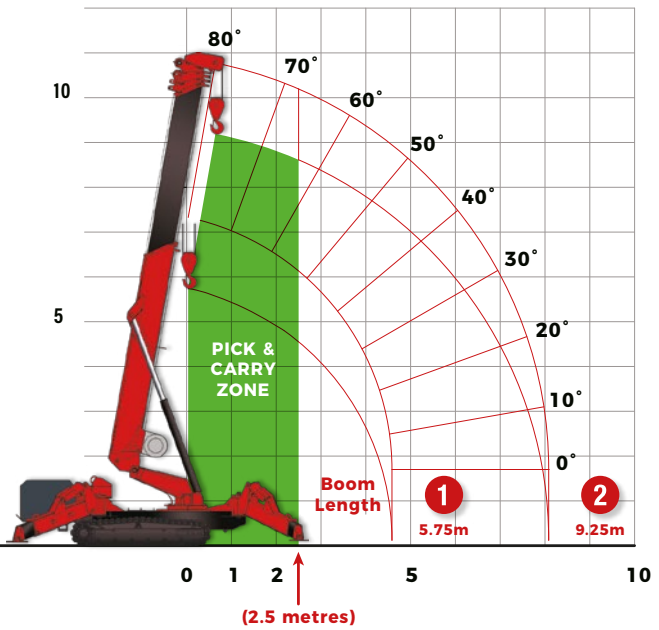
OUTRIGGERS FOLDED

Lifting Capacity 750kg
Working Radius 2.5m
Boom Length Boom 1 and 1+2 only



OUTRIGGERS EXTENDED

Lifting Capacity 1,500kg
Working Radius 2.5m
Boom Length Boom 1 and 1+2 only

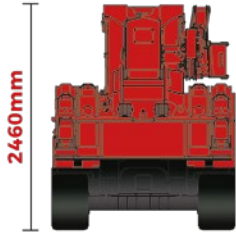


Fly Jib Net Rated Loads (Kg) - Angle Rated Outriggers Set To Maximum									
BOOM ANGLE	FLY JIB 1 (4.73m) - TILT ANGLES				FLY JIB 2 (7.87m) - TILT ANGLES				
	0°	20°	40°	60°	0°	20°	40°	60°	
80°	1000	850	700	610	1000	630	400	300	
70°	1000	850	700	610	1000	630	400	300	
60°	950	700	530	480	770	430	280	230	
50°	700	520	400		520	280	200		
40°	280	250	200		200	170	150		
30°	NOT ALLOWED				NOT ALLOWED				
20°									
10°									
0°									

Fly Jib Net Rated Loads (Kg) - Angle Rated Outriggers Set To Halfway									
BOOM ANGLE	FLY JIB 1 (4.73m) - TILT ANGLES				FLY JIB 2 (7.87m) - TILT ANGLES				
	0°	20°	40°	60°	0°	20°	40°	60°	
80°	1000	850	700	610	1000	630	400	300	
70°	1000	850	700	610	1000	630	400	300	
60°	950	700	530	480	700	430	280	230	
50°	420	400	400		350	350	200		
40°	200	200	180		130	130	130		
30°	NOT ALLOWED				NOT ALLOWED				
20°									
10°									
0°									

Fly Jib Net Rated Loads (Kg) - Angle Rated Outriggers Set To Minimum									
BOOM ANGLE	FLY JIB 1 (4.73m) - TILT ANGLES				FLY JIB 2 (7.87m) - TILT ANGLES				
	0°	20°	40°	60°	0°	20°	40°	60°	
80°	1000	850	700	610	1000	630	400	300	
70°	1000	850	700	610	1000	630	400	300	
60°	700	600	530	480	600	430	280	230	
50°	300	270	220		250	200	200		
40°	NOT ALLOWED				NOT ALLOWED				
30°									
20°									
10°									
0°									

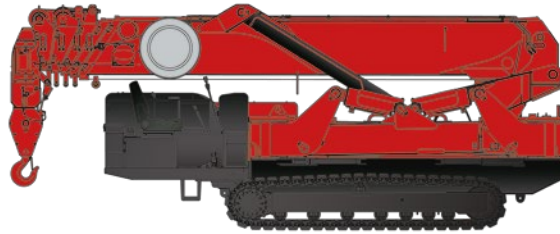
Dimensions



2460mm

2000mm

Track Width 400mm



2515mm

5035mm

6060mm

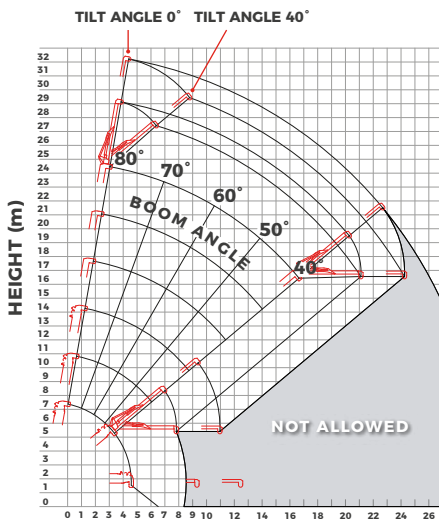


High resolution colour SLI

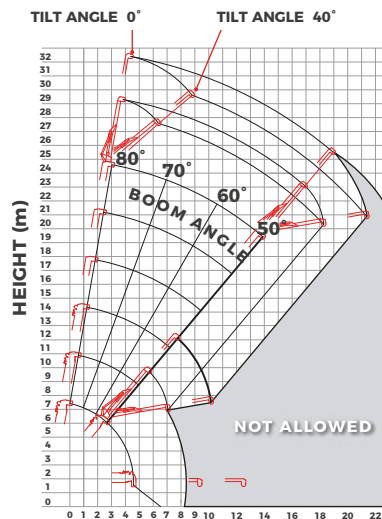


URW-1006 dashboard controls

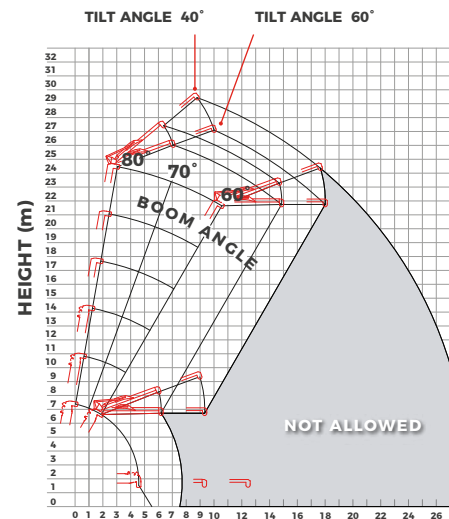
Fly Jib Working Range



WORKING RADIUS (m) Tilt Angles 0° - 40°
Outriggers extended to maximum and halfway



WORKING RADIUS (m) Tilt Angles 0° - 40°
Outriggers extended to minimum

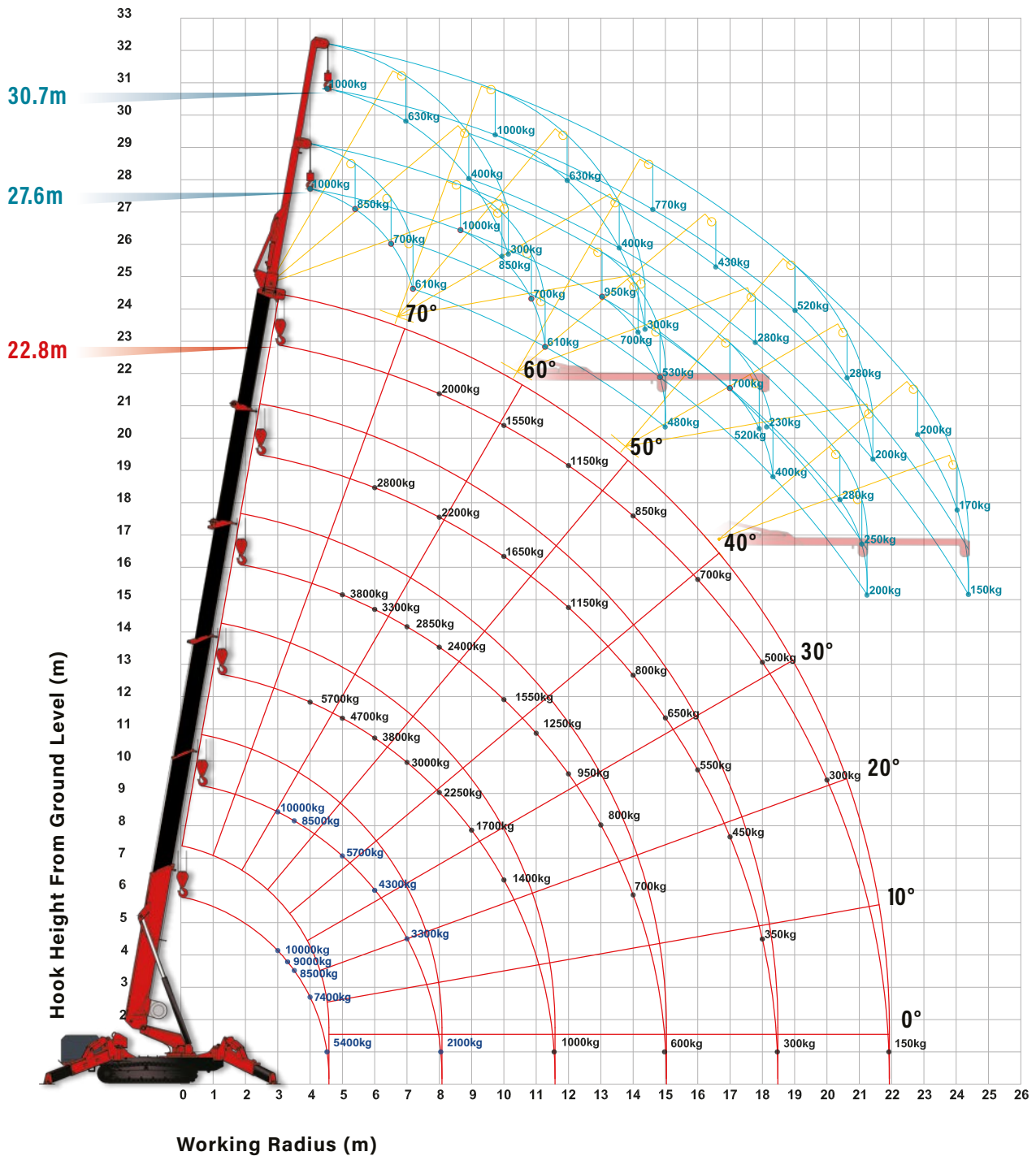


WORKING RADIUS (m) Tilt Angles 40° - 60°
Outriggers extended to maximum, halfway and minimum

Note: The above figures are based on a no-load condition and do not include the deflection of the boom.

URW-1006

Working Range





Riggers In Display



Riggers out Display



Variable footprint safe load indicator

