

# URW-245



- Total width 0.6m
- Max working radius 5.85m
- Petrol powered, optional LPG dual fuel
- Operator control of outrigger extension
- Radio remote control as standard
- Working area limitation
- Intelligent throttle activation for economy and ecology

**The URW-245 model in the UNIC Cranes Europe range offers unrivalled lifting power with its class beating minimal dimensions and weight.** This 2.4 tonne capacity crane is ideal for in-between floor operations and fits easily into a goods lifts without the need for disassembly. The URW-245 also leads the way with an array of safety features including a computer controlled, intelligent voice warning system.

## Additional Features



Radio remote control



Full safe load indicator

## Crane Specifications

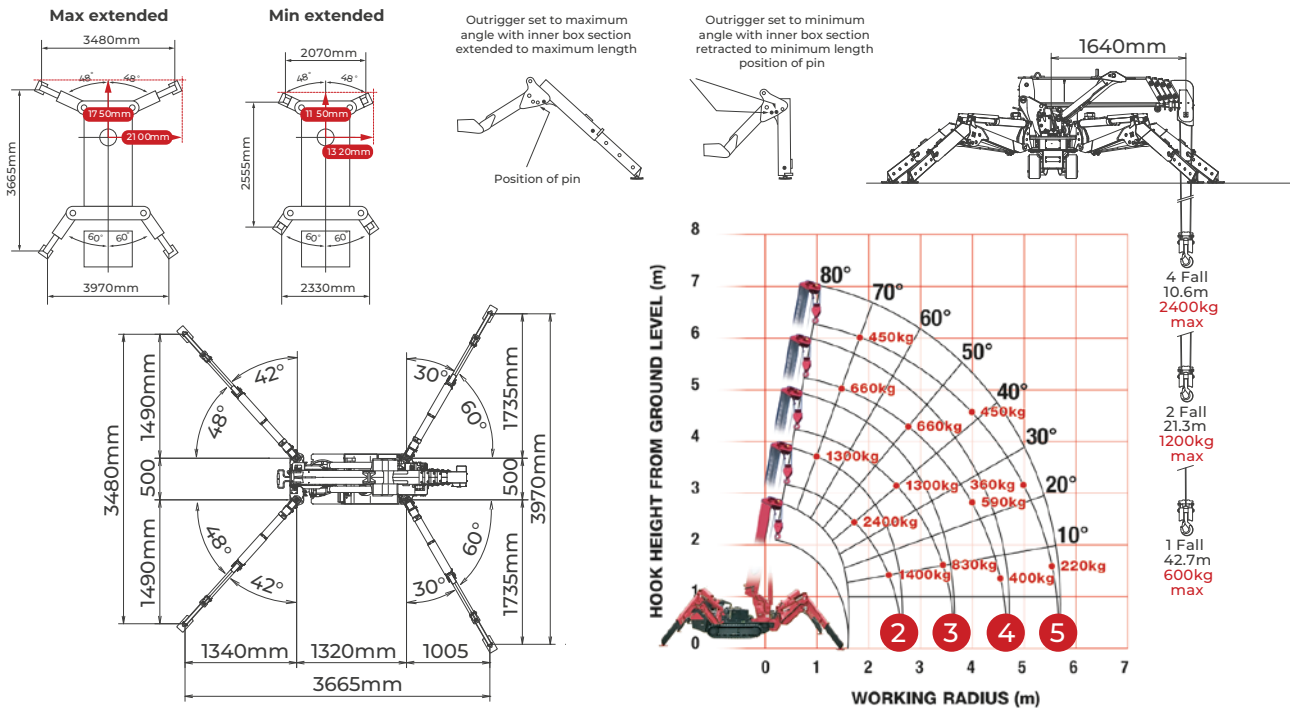
Crane capacity	capacity:	2.4t x 1.5m
Max working radius	max:	5.85m
Max lifting height	approx:	6.3m
Rope length	max:	10.6m (4 fall), 21.3m (2 fall), 42.7m (1 fall)
Dimensions	folded:	5610mm (l) x 1670mm (w) x 2185mm (h)
Weight	unladen:	1500kg
Point loadings	Due to the many variables involved, point loadings are only available on request	
Hook speed	approx:	13m/min (with 3 layers and 4 falls)
Telescopic system	boom length: telescoping speed: boom type:	1.98 - 6.19m 4.21m / 14 seconds 5 section, hydraulically telescoping boom, hexagonal box construction
Derricking angle/speed	approx:	0 - 80° / 10 seconds
Slewing angle/speed	approx:	360° (continuous) 2.0min rpm
Traction system	drive: travel speed: gradeability: track ground length: track ground pressure:	hydrostatic, stepless forward and reverse 0 - 2.1km/h (low), 0 - 3.8km/h (high) ± 20° (vertical), 20° (traverse) 1050mm 47kPa (0.48kg/cm²) (with 150mm tracks)
Engine	manufacturer: drive: maximum output: starting method: tank capacity:	Mitsubishi petrol (LPG dual option) 6.6kW (9PS) / 1800min rpm electric and recoil start as standard 6 litres
Standard equipment	computer controlled moment limiter (safe load indicator), radio remote control, overwinding alarm, computer controlled intelligent voice warning system, multi-function operation by radio remote control, intelligent throttle activation, automatic hook stow, overload warning alarms, overload warning lamps.	
Optional equipment	1 fall hook block, 2 fall hook block	

# 2.4t

Safe Working Load

# SPIDER PLUS

## Rated Loads & Outrigger Positions



### SECOND STAGE EXTENDED 1.98 - 3.05m BOOM LENGTH

Working radius	m	up to 1.30	1.50	1.80	2.00	2.50	2.71
Outrigger Max-extended	kg	2400	2400	1960	1760	1400	1350
Outrigger Min-extended	kg	1150	1150	700	550	330	310

### THIRD STAGE EXTENDED 3.05 - 4.11m BOOM LENGTH

Working radius	m	up to 1.50	2.00	2.60	3.00	3.50	3.77
Outrigger Max-extended	kg	1300	1300	1300	1060	830	710
Outrigger Min-extended	kg	350	350	350	230	170	150

### FOURTH STAGE EXTENDED 4.11 - 5.15m BOOM LENGTH

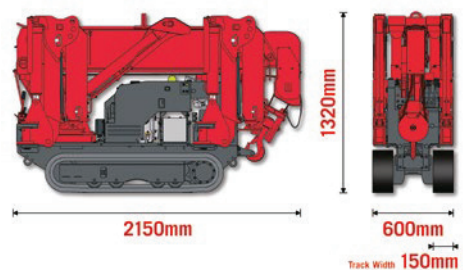
Working radius	m	up to 2.50	3.00	3.70	4.00	4.50	4.81
Outrigger Max-extended	kg	660	660	660	590	420	400
Outrigger Min-extended	kg	170	170	170	150	100	80

### FIFTH STAGE EXTENDED 5.15 - 6.19m BOOM LENGTH

Working radius	m	up to 3.50	4.00	4.50	5.00	5.50	5.85
Outrigger Max-extended	kg	450	450	400	360	250	220
Outrigger Min-extended	kg	150	150	100	80	60	50



### Dimensions



MINI CRANES