

URW-547



Safe load indicator

Capacity 4.0t x 2.5m

Weight 5010 - 5160kg

Max. Boom Length: 18.02m

Max. Lifting Height 18.2m



- Total width 1.4m
- Max working radius 17.83m
- Diesel powered and optional mains electric
- Zero length increase with electric option
- Operator control of outrigger extension
- Intelligent voice warning system
- Radio remote control as standard
- Intelligent throttle activation for economy and ecology

The URW-547 offers extended reach, providing a maximum lifting height of 18.2 metres and a maximum lifting capacity of 4 tonnes as standard on the main boom. The outrigger footprint remains the same as the URW-506, maintaining its compact dimensions.

Remotes



Standard radio remote control

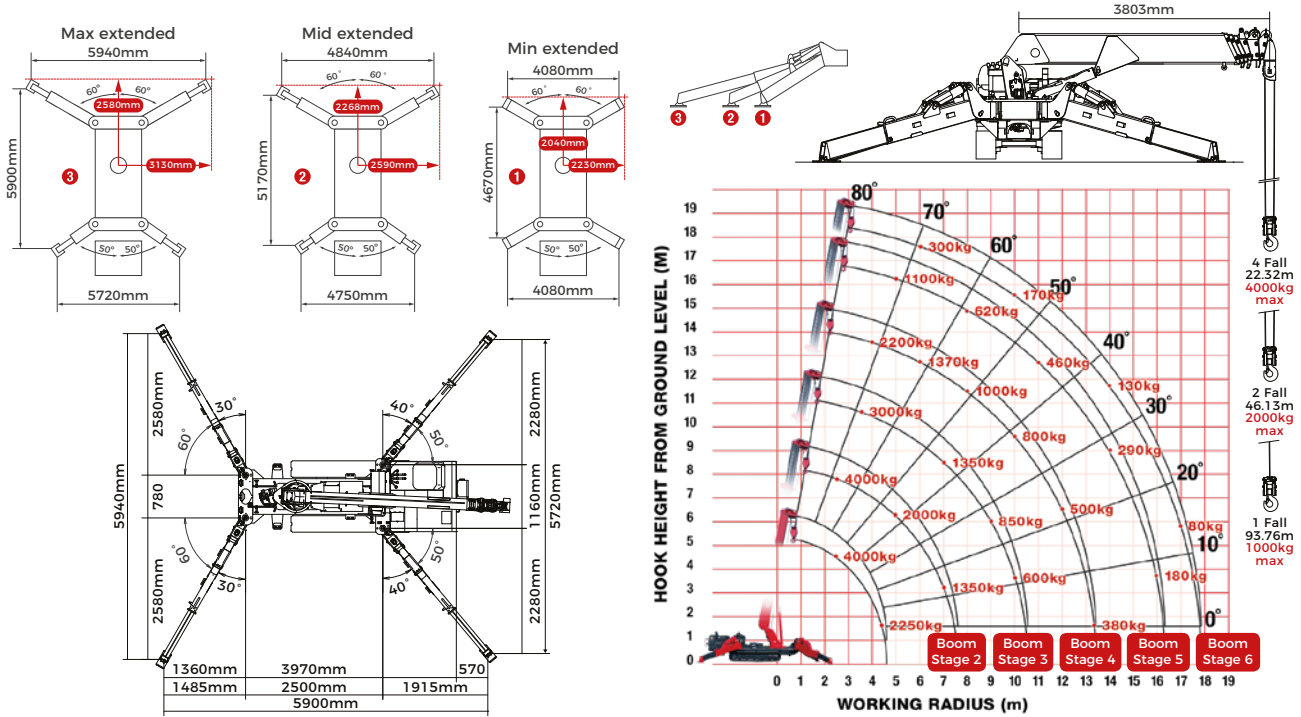
Crane Specifications

Crane capacity	capacity:	4.0t x 2.5m
Max working radius	max:	17.83m
Max lifting height	approx:	18.2m
Rope length	max:	22.32m (4 fall), 46.13m (2 fall), 93.76m (1 fall)
Dimensions	folded:	4955mm (l) x 1400mm (w) x 1980mm (h)
Weight	unladen:	5010kg (5160kg with electric option)
Point loadings	Due to the many variables involved, point loadings are only available on request	
Hook speed	approx:	14m/min (with 5 layers and 4 falls)
Telescopic system	boom length:	3.99 - 18.02m
	telescoping speed:	14.03m/55 seconds
	boom type:	7 section hydraulically telescoping boom, hexagonal box construction
Derricking angle/speed	approx:	0 - 80°/18.0 seconds
Slewing angle/speed	approx:	360° (continuous) 2.5min rpm
Traction system	drive:	hydrostatic 2-speed, stepless forward and reverse
	travel speed:	0 - 3km/h
	gradeability:	± 20° (vertical) 20° (traverse)
	track ground length:	1750mm
	track ground pressure:	47kPa (0.48kg/cm ²)
	track width:	300 mm
Engine	manufacturer:	Mitsubishi / Yanmar
	drive:	diesel (electric dual power option)
	maximum output:	17.5kW (23.8PS) / 2100min rpm
	starting method:	electric
	tank capacity:	40 litres
Electric motor	power	7.5 kW
	tank capacity	400v AC 50/60Hz
Standard equipment	controlled intelligent voice warning system, multi-function operation by radio remote control, intelligent throttle activation, automatic hook stow, overload warning alarms, overload warning lamps, working area limitation controlled intelligent voice warning system, multi-function operation by radio remote control, intelligent throttle activation, automatic hook stow, overload warning alarms, overload warning lamps, working area limitation	
Optional equipment	1 fall hook block, 2 fall hook block, mains electric dual power (400v), low marking tracks, slew limitation, searcher hook small 500kg, data logging	

4.0t

Safe Working Load

Rated Loads & Outrigger Positions



SECOND STAGE EXTENDED 3.99 - 7.7m BOOM LENGTH

Working radius	m	up to 2.5	2.7	3.0	3.5	4.0	4.5	5.0	5.5	6.0	7.0	7.25	7.51
Outrigger	Max-extended	kg	4000	3850	3500	3000	2550	2250	2000	1800	1630	1350	1300
	Mid-extended	kg	4000	3850	3500	3000	2550	2200	1850	1630	1400	1010	850
	Min-extended	kg	4000	3850	3500	3000	2550	2100	1640	1320	1080	750	620

THIRD STAGE EXTENDED 7.7 - 10.66m BOOM LENGTH

Working radius	m	up to 3.5	4.0	5.0	6.0	7.0	8.0	9.0	10.0	10.20	10.47
Outrigger	Max-extended	kg	3000	2550	2000	1650	1350	1100	850	600	520
	Mid-extended	kg	3000	2550	1850	1400	1100	830	630	490	430
	Min-extended	kg	3000	2550	1650	1150	840	620	460	350	300

FOURTH STAGE EXTENDED 10.66 - 13.57m BOOM LENGTH

Working radius	m	up to 4.0	4.5	5.0	6.0	7.0	8.0	9.0	10.0	11.0	12.0	13.0	13.38	
Outrigger	Max-extended	kg	2200	1900	1700	1370	1150	1000	900	800	660	500	410	380
	Mid-extended	kg	2200	1800	1600	1300	1050	850	700	550	450	360	290	260
	Min-extended	kg	2200	1800	1600	1150	800	650	520	400	320	250	190	170

FIFTH STAGE EXTENDED 13.57 - 16.48m BOOM LENGTH

Working radius	m	up to 5.0	5.5	6.0	7.0	8.0	9.0	10.0	11.0	12.0	13.0	14.0	15.0	16.0	16.29	
Outrigger	Max-extended	kg	1100	950	880	730	620	570	520	460	410	350	290	230	180	170
	Mid-extended	kg	1100	950	880	700	600	520	450	400	350	300	250	190	150	140
	Min-extended	kg	1100	950	850	700	500	420	390	340	290	230	180	140	100	100

SIXTH STAGE EXTENDED 16.48 - 18.02 BOOM LENGTH

Working radius	m	up to 6.0	7.0	8.0	9.0	10.0	11.0	12.0	13.0	14.0	15.0	16.0	17.0	17.83	
Outrigger	Max-extended	kg	300	250	230	200	170	160	150	140	130	120	110	80	50
	Mid-extended	kg	300	250	230	200	170	160	150	140	130	120	110	80	50
	Min-extended	kg	300	250	230	200	170	160	150	140	130	120	110	80	50

Dimensions

