

URW-376



- Total width 1.3m
- Max working radius 14.45m
- Diesel powered and optional mains electric
- Zero length increase with electric option
- Operator control of outrigger extension
- Intelligent voice warning system
- Radio remote control as standard
- Intelligent throttle activation for economy and ecology

The URW-376 UNIC mini crane features a six-section hydraulic boom to allow a maximum working radius of 14.45m. This mid-capacity spider crane can be controlled either from the onboard operators seat or from a distance using a radio remote control, or optional radio remote control with digital feedback.

Remotes



Standard radio remote control

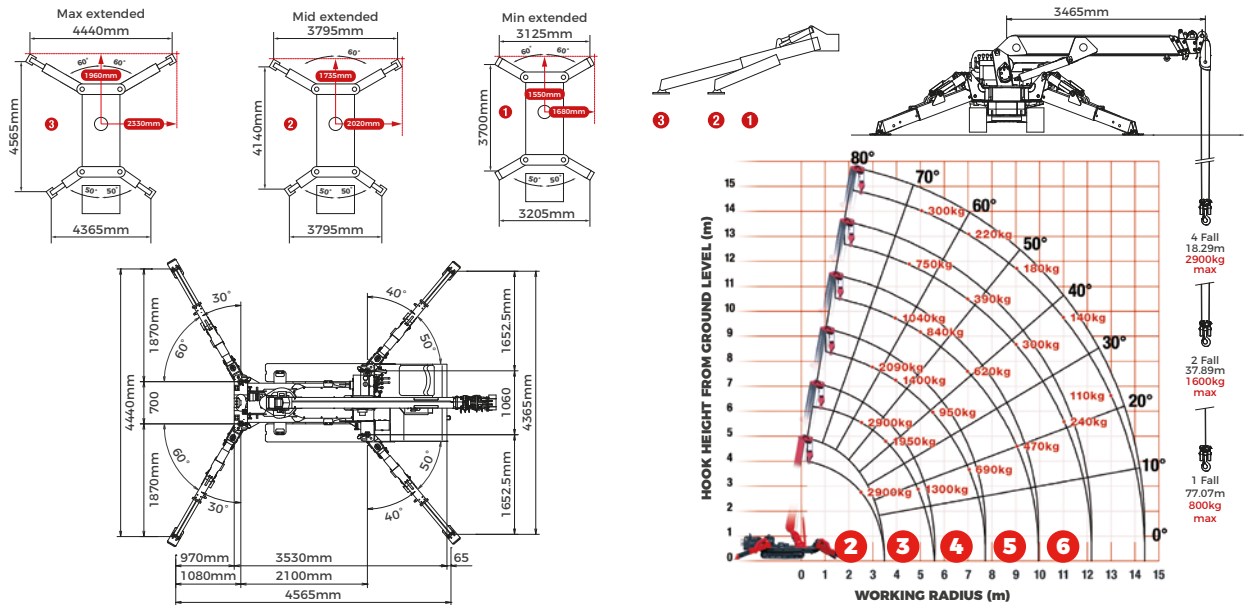
Crane Specifications

Crane capacity	capacity:	2.9t x 2.5m
Max working radius	max:	14.45m
Max lifting height	approx:	14.9m (16.63m with fly jib, 17.33m with fixed hook)
Rope length	max:	18.29m (4 fall), 37.89m (2 fall), 77.07m (1 fall)
Dimensions	folded:	4340mm (l) x 1300mm (w) x 1800mm (h)
Weight	unladen:	3850kg (4000kg with electric option)
Point loadings	Due to the many variables involved, point loadings are only available on request	
Hook speed	approx:	17m/min (with 4 layers and 4 falls)
Telescopic system	boom length: telescoping speed: boom type:	3.63 - 14.61m 10.98m/23 seconds 6 section hydraulically telescoping boom, hexagonal box construction
Derricking angle/speed	approx:	0 - 80°/10 seconds
Slewing angle/speed	approx:	360° (continuous) 2.5 min rpm
Traction system	drive: travel speed: gradeability: track ground length: track ground pressure: track width:	hydrostatic, stepless forward and reverse 0 - 3 km/h ± 20° (vertical), 20° (traverse) 1750mm 36kPa (0.37 kg/cm ²) 300 mm
Engine	manufacturer: drive: maximum output: starting method: tank capacity:	Mitsubishi / Yanmar diesel (electric dual power option) 18kW (24.5PS) / 2100min rpm electric 40 litres
Electric motor	power: voltage:	7.5kW 400v AC 50/60Hz
Standard equipment	computer controlled moment limiter (safe load indicator), radio remote control, overwinding alarm, computer controlled intelligent voice warning system, multi-function operation by radio remote control, intelligent throttle activation, automatic hook stow, overload warning alarms, overload warning lamps, working area limitation	
Optional equipment	1 fall hook block, 2 fall hook block, mains electric dual power (400v), searcher hook 700kg, fly jib 700kg with single part line.	

2.9t

Safe Working Load

Rated Loads & Outrigger Positions



SECOND STAGE EXTENDED 3.63 - 5.85 m BOOM LENGTH

Working radius	m	up to 2.0	2.5	3.0	3.5	4.0	4.5	5.0	5.69
Outrigger Max-extended	kg	2900	2900	2350	1950	1670	1450	1300	1070
Outrigger Mid-extended	kg	2900	2900	2320	1920	1570	1250	990	770
Outrigger Min-extended	kg	2900	2900	2170	1500	1120	900	720	470

THIRD STAGE EXTENDED 5.85 - 8.04 m BOOM LENGTH

Working radius	m	up to 2.7	3.0	3.5	4.0	4.5	5.0	5.5	6.0	7.0	7.88
Outrigger Max-extended	kg	2240	2090	1650	1400	1220	1070	950	840	690	590
Outrigger Mid-extended	kg	2240	2060	1650	1390	1170	1000	820	640	450	370
Outrigger Min-extended	kg	2240	2060	1570	1220	1120	830	650	510	300	190

FOURTH STAGE EXTENDED 8.04 - 10.23 m BOOM LENGTH

Working radius	m	up to 4.0	4.5	5.0	6.0	7.0	8.0	9.0	10.0
Outrigger Max-extended	kg	1040	930	840	730	620	520	470	380
Outrigger Mid-extended	kg	1030	920	830	670	500	380	280	200
Outrigger Min-extended	kg	1030	820	640	470	310	220	130	90

FIFTH STAGE EXTENDED 10.23 - 12.42 m BOOM LENGTH

Working radius	m	up to 4.5	5.0	6.0	7.0	8.0	9.0	10.0	11.0	12.26
Outrigger Max-extended	kg	750	620	480	390	340	300	270	240	230
Outrigger Mid-extended	kg	750	620	470	390	320	270	220	170	130
Outrigger Min-extended	kg	750	620	400	250	180	130	90	60	10

SIXTH STAGE EXTENDED 12.42 - 14.61 m BOOM LENGTH

Working radius	m	up to 4.9	5.0	6.0	7.0	8.0	9.0	10.0	11.0	12.0	13.0	14.45
Outrigger Max-extended	kg	300	270	250	220	200	180	160	140	130	110	100
Outrigger Mid-extended	kg	300	270	250	220	200	180	160	120	90	60	40
Outrigger Min-extended	kg	300	270	250	220	170	110	80	50	30	20	10

Optional fly jib & searcher hook



Crane capacity	700kg (max)
	280kg section 6
Length	2017 mm
Weight	50 kg
Angles	0°, 20°, 40°, 60°

Searcher Hook

Fly Jib

Dimensions

